



SAGE Landfall Pipeline Inspection

30" Gas, Beryl Alpha to St Fergus Terminal

Project Details

Location: St Fergus, North East Scotland
 Water Depth: 0 to 35m
 Date: August, 2019

Scope Of Work

iSURVEY was contracted to perform an acoustic inspection and cathodic protection survey of the 30" gas export line from Beryl Alpha to St Fergus Terminal (KP0.000 to KP3.100) at the St Fergus Landfall, North East Scotland.



Moonpool deployed Edgetech 6205 (MBES/SSS)

iSURVEY scope of work involved provision of:

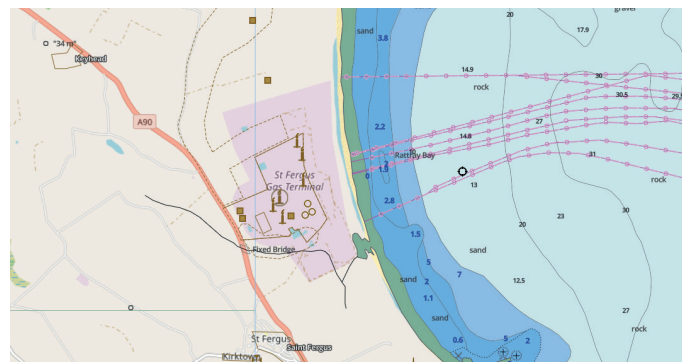
- Survey vessel Coral Wind, complete with all required survey, positioning, CP and geophysical survey equipment.
- High resolution Multi-beam Echo Sounder (MBES) and Sidescan Sonar (SSS) data along a corridor encompassing the gas export line.
- Sub-bottom profiler data at 50m intervals along the pipeline in order to measure depth of burial.
- CP trailing wire data along the pipeline
- Delivery of final report, DTM and alignment chart.



MV Coral Wind

The Edgetech 6205, a combined MBES and SSS system, was vessel mounted through a moonpool in the centre of the vessel. The use of vessel mounted SSS removed positional uncertainties associated with layback positioning in shallow water.

The Innomar SES-2000 standard system was pole mounted over the side of the vessel.



St Fergus Landfall

Continuous cathodic potential data was obtained using a weighted marine silver/silver chloride half-cell and trailing wire spooling system. The trailing wire was connected to the pipeline via a test post facility near the beach. The information was logged and processed using the computerised CPDAS (Cathodic Protection Data Acquisition System).

Data QC and processing was undertaken locally over night to ensure sufficient data coverage and quality. Final processing, interpretation and reporting was completed in Westhill following demobilisation.

Significant events and anomalies were reported and included in alignment charts to supplement the results report.

NORWAY

iSURVEY Group AS
 iSURVEY AS
 Billingstadsletta 14
 NO-1396 Billingstad
 Norway

+47 4541 4100
 norway@isurvey-group.com

sales@isurvey-group.com

UNITED KINGDOM

iSURVEY Offshore Limited
 Unit 7, Kingshill Park
 Venture Drive, Westhill
 Aberdeenshire, AB32 6FL

+44 (0)1224 418210
 uk@isurvey-group.com

SINGAPORE

iSURVEY Pte Ltd
 22 Pandan Road
 Singapore 609274

+65 6513 0589
 singapore@isurvey-group.com

www.isurvey-group.com

